



WAGNER BAND

Thunderbird Invitational

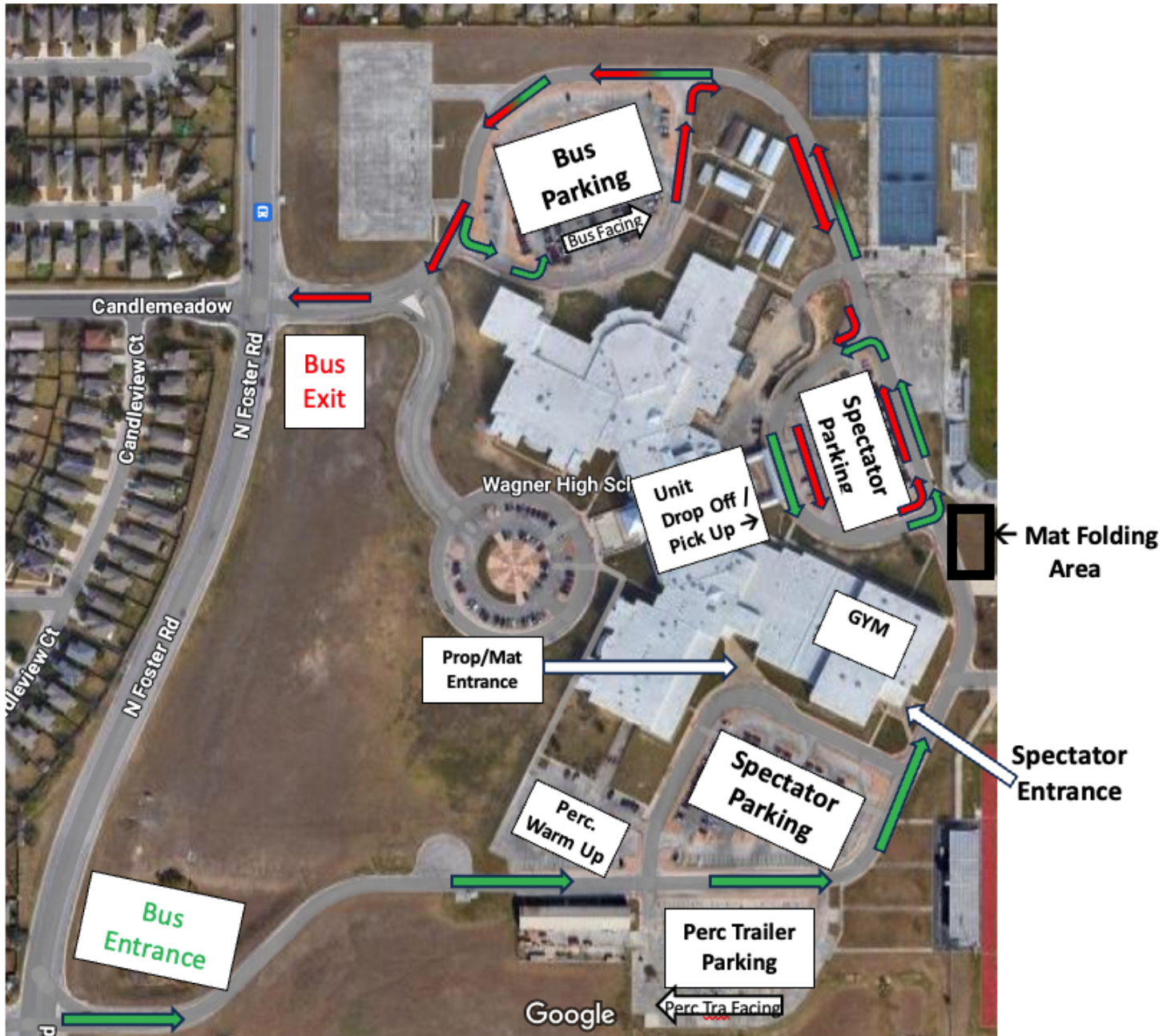
Saturday, February 3rd, 2024
Karen Wagner High School
Hosted by The Wagner Band &
Wagner Band Boosters

Thank you for coming to our contest! Please read this packet carefully. If you have any questions, comments, or concerns you can email me at jperez906@judsonisd.org or call me at (210) 662 5040.

From our program to yours, best of luck this season!

J. Raul Perez
Director of Bands
Wagner High School

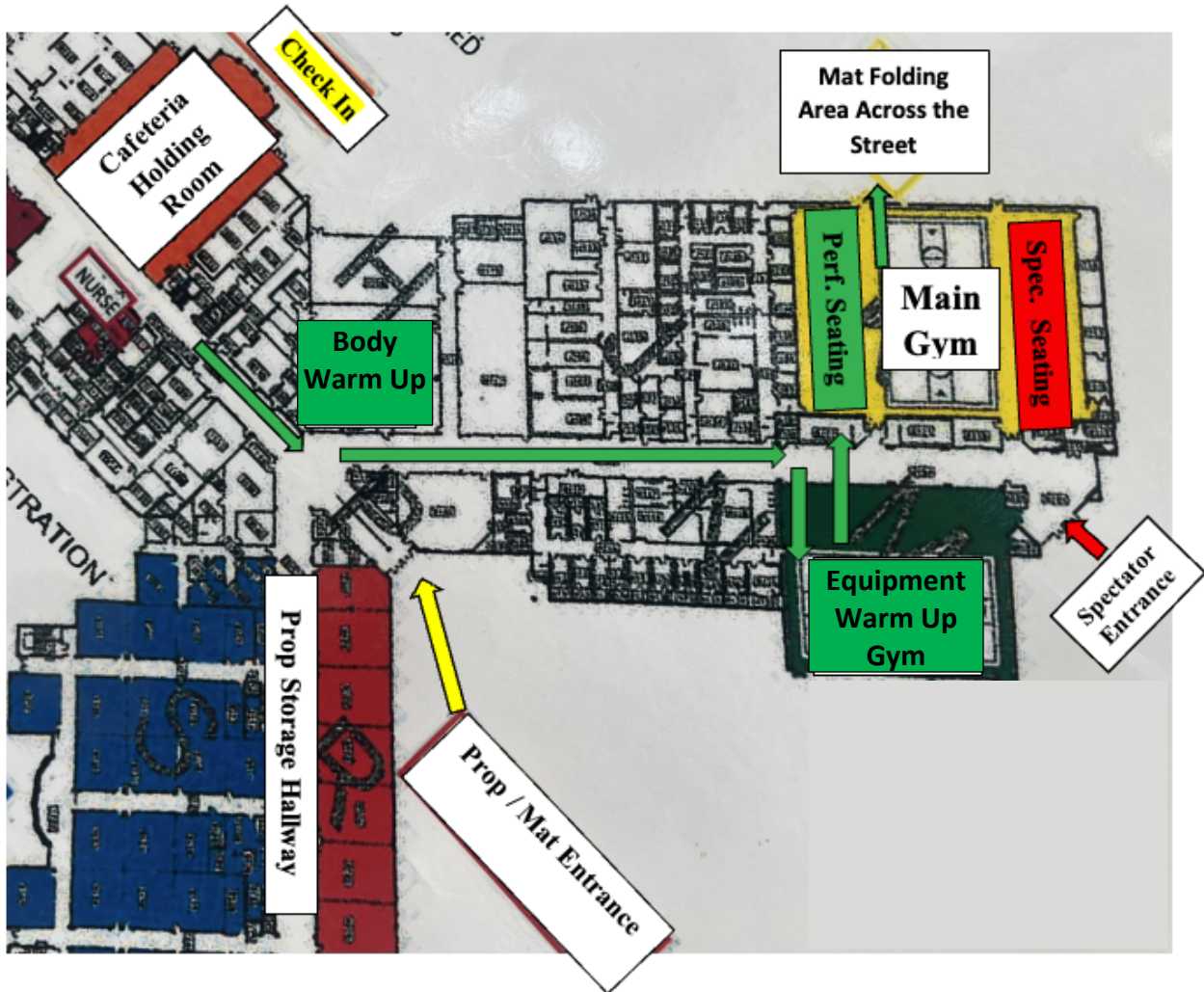
Wagner High School TECA Traffic Flow Map



Bus Parking – Please face East (tennis courts) when parked, this will ensure better flow.

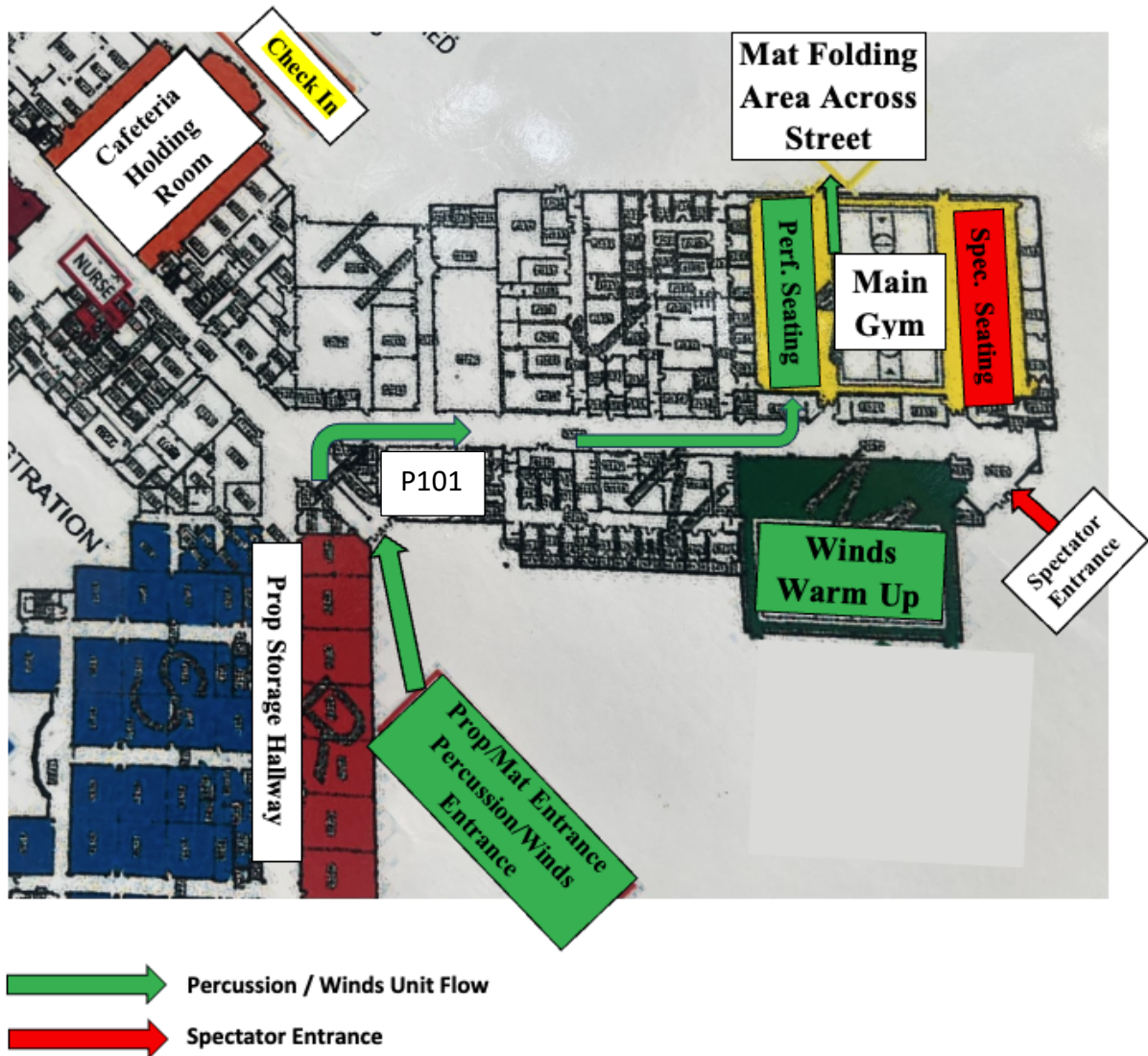
Percussion Trailers – Please face West (Foster Rd) when parked, this will ensure better flow.

Wagner High School TECA **GUARD** Contest Flow



-  Unit Flow
-  Spectator
-  Prop / Mat Entrance

Wagner High School TECA Winds and Percussion Contest Flow



Loading and uploading of percussion equipment will happen at the percussion trailer parking zone only and **NOT ON THE CURB**, please view the **Traffic Flow Map** for reference.

Warm Up Area for percussion are labeled on the **Traffic Flow Map**. Please be mindful of the space and remember it is on a first come first serve basis.

PARKING: Spectator parking is in the Wagner HS Athletic Lot located in the back part of the campus. Please see **Traffic Flow Map** for reference.

GUARD: Equipment trucks (floors and props) will be unloaded at Wagner athletic lot located in the back of the campus, please see **Traffic Flow Map** for reference. After unloading floors and props, equipment trucks should park in the bus parking area labeled on the **Traffic Flow Map**.

PERCUSSION: Percussion trailers/ trucks may park and unload in the back part of the athletic lot, please see **Traffic Flow Map** for reference. Please be mindful of the space and remember it is on a first come first serve basis.

Buses: should unload at the cafeteria bus loop located in the back of the campus for unit check-in, then should park at the auditorium parking, please see **Traffic Flow Map** for reference. Be mindful of space and face the tennis courts when parked.

CHECK-IN

Guard: The check-in table will be located at the cafeteria entrance, please see **Guard Contest Flow Map** for reference. Performing members must check in prior to warm-up.

Equipment: - At check-in, performers must show the check-in representative that equipment is appropriately padded and taped.

Winds and Percussion: The check-in table will be located at the cafeteria entrance, please see **Winds and Percussion Contest Flow Map** for reference. Performing members must check in prior to warm-up.

PERFORMERS, CREW, & STAFF ADMISSION

Admission will be given to performers and up to 10 student crew members.

UNIT HOLDING AREA

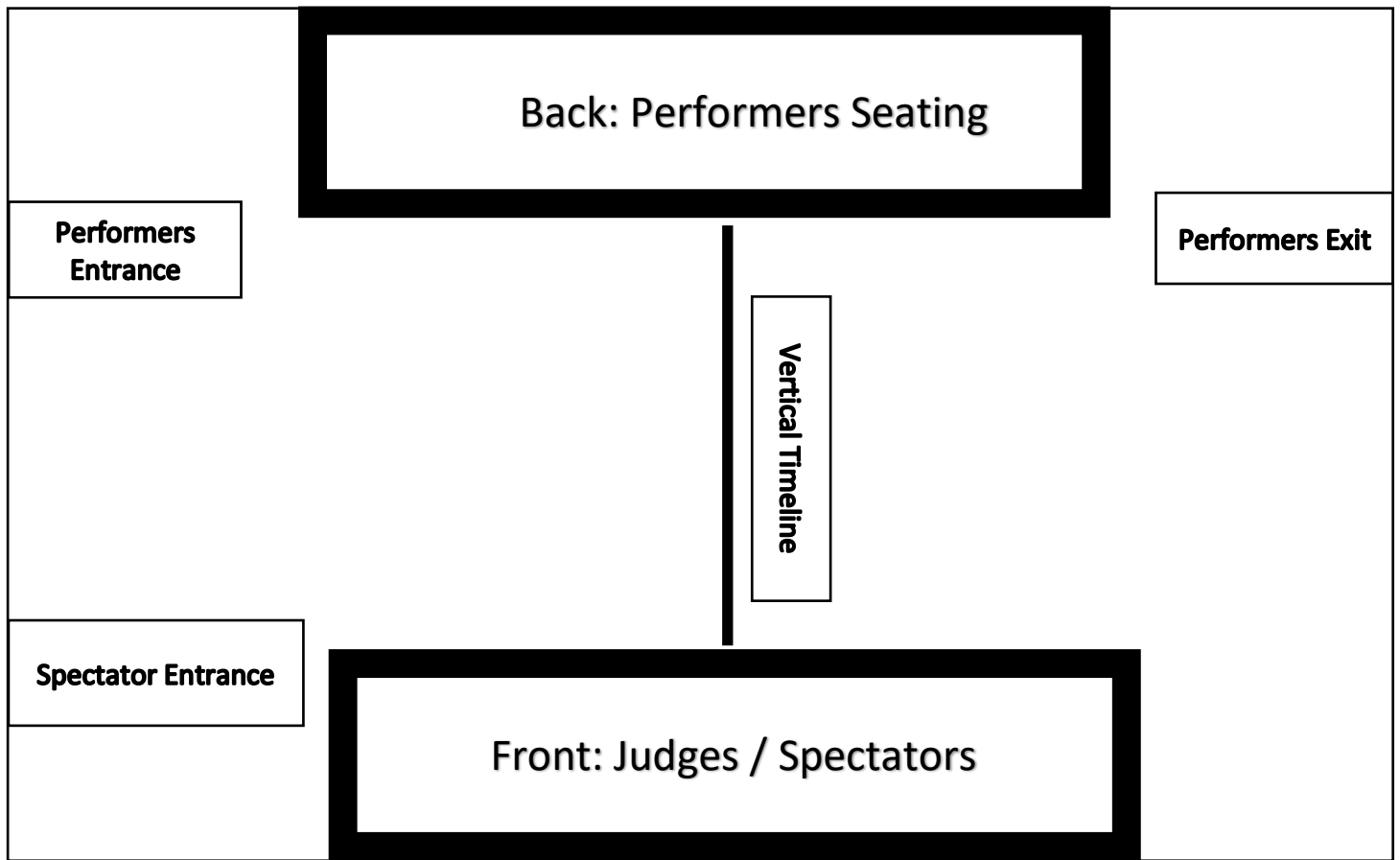
Cafeteria will be the holding area for this contest. Please be mindful of how much space your unit takes. Spaces will be at a first come first serves basis. **Please always have an adult supervising the performing units while in the holding area.** Students and Staff may not spin, toss, or maneuver equipment inside any of the buildings at any time other than in designated areas. You may use the area in front of the cafeteria extra equipment warmup.

PERFORMANCE

5 Minutes before warm-up - Please report to the Volunteer table close to the concessions in the hall just besides the cafeteria. Equipment and props will be double checked for appropriate taping for protection of the gymnasium floors.

Body Warm-Up – From the volunteer table, students will proceed to body warm-up located in the Wagner dance studio. Students may stretch or do a run through of body mechanics. No equipment will be utilized during the body warm-up segment of the official warm-up time. A sound system will be available.

Equipment Warm-Up – From Body Warm-Up, students will proceed to equipment warmup. The group will be in a holding area until the Equipment Warm-Up time starts. A sound system will be available. After Equipment Warm-Up, students will be led to the performance area. The group will be in a holding area until the official set-up and performance time starts.



We will be using a
VERTICAL CENTER LINE
Flow for the Performance Area.

All contest rules and regulations from the 2024 TECA Constitution and By-Laws and 2024 WGI Rule Books will be followed.

POST PERFORMANCE: After you exit the performance area, staff members should make sure that equipment is put away. Guards will be directed to a floor-folding area across the street (please see **Traffic Flow Map** for reference). Please fold floors quickly and exit the area to prevent a “Traffic jam.”

RETREAT

Captains will line up in the warm-up gym after the last performance. Retreat should begin promptly at the conclusion.

Critique:

Percussion and Winds critique will be in Room P101 after the last wind unit. Please see **Percussion and Winds Contest Flow Map** for reference.

Guard Units: There will not be a critique at this show.

Admission:

\$10.00 Adults

\$5.00 Student Spectators, that are not participating with a unit.

FREE Children Under 5.

CONCESSIONS Concessions will be available throughout the contest at the performance gym and in the cafeteria. Outside food or drink will not be allowed inside the school.

Judson I.S.D. is a Clear Bag Policy District.

Please let your spectators know that they cannot enter the gym with bags that are not clear.
This will avoid parents missing their child's performance for having to go back to their vehicles to drop off their non-clear bags.

CLEAR BAG POLICY



NO PURSES. NO BAGS.



Prohibited Bags

PROHIBITED ITEMS INCLUDE, BUT ARE NOT LIMITED TO:

- All purses, bags or containers larger than a small clutch bag
- Backpacks
- Binocular case – Binoculars may be worn around the neck
- Briefcases
- Camera bags
- Cinch bags
- Computer bags
- Coolers
- Fanny packs
- Luggage of any kind



Approved Bags

CLEAR TOTE
Plastic, vinyl or PVC –
not exceeding 12" x 6" x 12"

PLASTIC STORAGE BAG
Clear, one (1) gallon,
re-sealable



SMALL CLUTCH PURSE

Approximately the size of your hand, but absolutely no larger than 5.5" x 8.5" (see our small guide sheet) with or without a handle or strap. Can be carried separately or within an approved plastic bag shown above.

